

CLOVER TOOL
Mfg. Ltd.



C ommitment to Quality

L oyalty to our Customers and Employees

O pportunity to Grow with our Partners

V iable solutions to the Industries Challenges

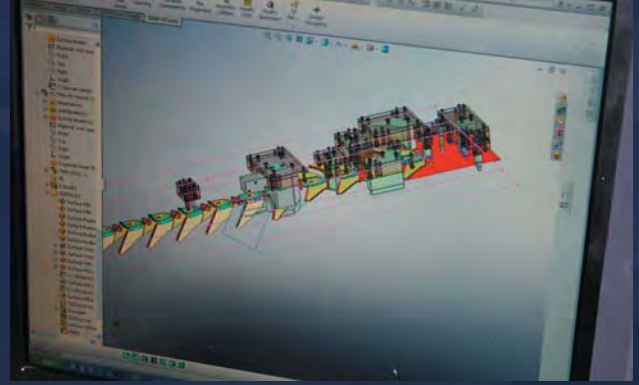
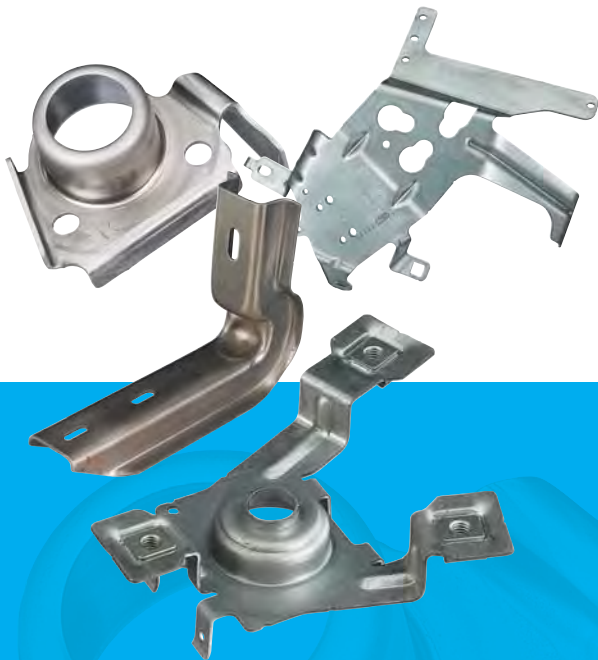
E nthusiasm for our Work

R eliability in all our Undertakings



From its 1979 start as a tool and die building company, today Clover Tool Manufacturing Ltd. has become a highly respected manufacturer in North America.

We welcome this opportunity to introduce you to our various processes and our company. Clover Tool's combination of engineering and design support, tool building expertise, metal stamping and sub assembly capabilities makes us a highly qualified partner to provide your company with all the competitive advantages we can offer.



DESIGN AND ENGINEERING

In providing Tool & Die solutions for its customers, Clover Tool draws upon the vast experience of its knowledgeable team.

Our most successful customer relationships grow from cooperation at the earliest stages of new programs. In this way the ultimate design takes into consideration all of our customer's function, quality requirements and cost savings. This ensures the manufacturability and repeatability of your components. This approach minimizes the risks associated with any new program launch and maximizes success.

Tools are designed using the latest 2-D and 3-D CAD/CAM technology; allowing Clover Tool to share files with customers and reduce product development time. Clover Tool offers complete prototype services.





CLOVER TOOL
Mfg. Ltd.



Progressive Dies - Metal Stampings - Sub Assemblies - Tool Design
Projection Welding - Robotic Mig-Welding

Commitment to Quality
Loyalty to our Customers and Employees
Oppportunity to grow with our Partners
Viable Solutions to the Industries Challenges
Enthusiasm for our Work
Reliability in All our Undertakings

Incorporated in 1979, Clover Tool Manufacturing Ltd. is an automotive parts manufacturer of Tool & Die (progressive, fine blank and hand transfer) Metal Stampings and sub assemblies. We are a Canadian based and privately owned company.



ORGANIZATION STRUCTURE

Clover Tool has established, self directed work teams with hands on management. These seasoned teams all have years of automotive experience. Our management and senior management are all experienced business professionals who have been in the industry for years and have developed the skills and knowledge to handle all situations.

PRODUCTION STATISTICS

Clover Tool Processes on average more than 100 tons of steel per day, producing 1.50 million parts per week.

QUALITY

Clover Tool is a ISO/TS 16949:2002 registered company.

PRODUCT PROFILE

A sample of our products include:

- Window Regulators
- Hand Brake
- Door Hinges
- Engine Mountings
- Auto Closures
- Recliner Parts and Assemblies
- Engine Components
- Hood Hinges
- Bracket Reinforcements
- Seat Tracks
- Door Locks
- Wave Plate
- Office Furniture
- Commercial Heat Exchangers



CLOVER TOOL
Mfg. Ltd.



QUALITY POLICY

Clover Tool's policy is to maintain our customers' confidence as a highly capable supplier of metal products, which meet and/or exceed their requirements at competitive prices.



PROGRAM MANAGEMENT

The major strength of the company is providing low cost, high quality, manufacturing solutions.

CAD systems used are primarily Key-creator and Mastercam. Additionally we have the capability, through diverse suppliers, to use Auto Cad, Solid Works, Catia and Fast Blank.

For the exchange of information we have the capability to use EDI and have a fully functional FTP site.

BUSINESS HISTORY

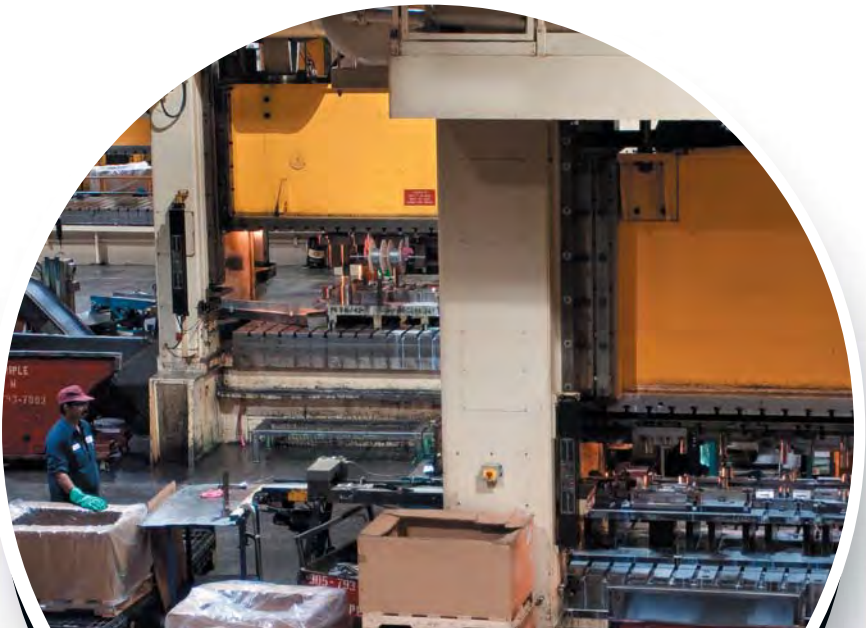
Clover Tool has grown steadily since its inception in 1979, first as a tool and die shop and more recently as a manufacturer of finished and semi-finished components.

The original operation, housed in a 2000 square foot shop in Concord, was strictly a tool and die business. By 1989, Clover Tool acquired a 14,000 square foot facility and employed 30 people.

In 1993, a stamping operation was added, and subsequently Clover Tool became a supplier of finished and semi-finished

components. With the new partnership of tooling and stamping, Clover Tool flourished and expanded its operations several times.

Today Clover Tool operates in over a 130,000 square foot facility providing a full service solution to its customers. From prototyping, tooling, R&D work, stamping, assembling and welding to finished product, Clover Tool and its dedicated staff are committed to our customers requirements and wishes.





METAL STAMPING

With a wide range of presses and tonnages, Clover Tool has the expertise and resources to manage complex tooling for both new and existing stamping programs. To maximize production throughput, Clover Tool uses the latest stamping technology including link-motion presses, servo-feed systems, modern press controls, in-die insertion technology and in-die sensing.



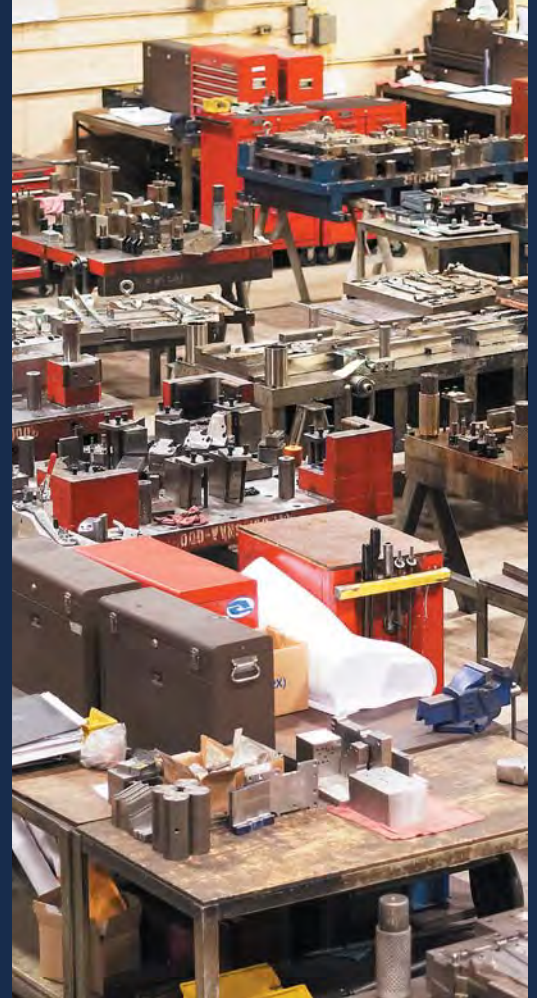
AUTOMATION AND ASSEMBLIES

Clover Tool's engineering team works closely with the customer to minimize costs and eliminate any potential quality concerns. Clover Tool's team typically utilize automation wherever possible including robotic MIG and TIG welding, resistance spot welding, and mechanical fastening.

Vision systems, sensors, and other part processing techniques are utilized throughout the assembly process.

TOOL BUILDING INNOVATION

All tooling is designed, built and serviced in-house. Tools range from single cavity, compound dies to multi-cavity, multi station progressive dies. Clover Tool designers and toolmakers continually create new and innovative solutions to meet and exceed customer requirements. Clover Tool also supplies dies designed and built to customer standards for the customers own manufacturing facilities.



QUALITY POLICY

Clover Tool's policy is to maintain our Customers' confidence as a highly capable supplier of metal products, which meet and / or exceed their requirements at competitive prices.



PROGRESSIVE DIES
METAL STAMPINGS
CNC - WIRE EDM - CMM
TOOL DESIGN
SUB ASSEMBLIES
ROBOTIC MIG WELDING
PROJECTION WELDING
LASER SCANNING & ASSEMBLY



CLOVER TOOL
Mfg. Ltd.

8271 Keele Street, Concord, Ontario, Canada L4K 1Z1

P 905-669-1999 **F** 905-669-3565

www.clovertoolmfg.com